

AIRSCANNER ANTIVIRUS SCHEDULER FOR WINDOWS MOBILE SMARTPHONES

This following is hands-on guide for using the Airscanner Antivirus Scheduler for Windows Mobile Smartphones

Airscanner Scheduler

The scheduler is a standalone tool that is bundled with the antivirus installer. It is installed as a separate program the first time the antivirus is downloaded and installed. It is a powerful, fully configurable, highly granular scheduling tool that gives you total control over how often you want to automatically scan or update your antivirus software to help protect against the latest threats.

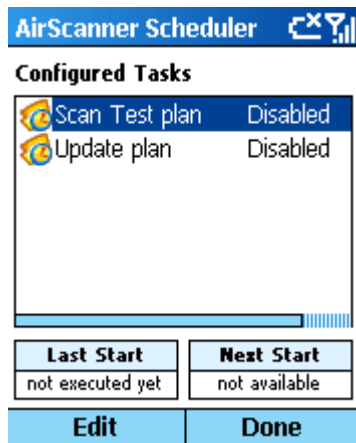
The **Scheduler** Icon is shows as menu item #3 in the following screenshot:



Main Screen

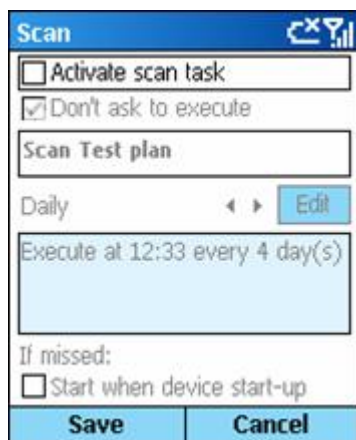
By clicking on “Scheduler” in the screenshot above, the program interface will open. The screenshot below shows a list with two tasks for scheduling. The task description (e.g. “Scan Test Plan”) and it’s status (e.g. “Disabled”) appear on the list. By default, the two options (Scan Test Plan and Update Plan) are disabled. To edit them, select an item on the list and so press the Edit button.

Note that at the very bottom of the screen the “Last Start” and “Next Start” fields show the last task execution that was successful, as well as the next execution that is scheduled.

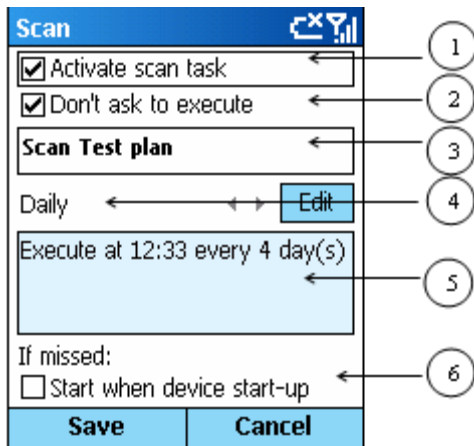


Setting up your Scan Test Plan

By clicking “Scan Test Plan”, the following appears with all commands disabled by default.

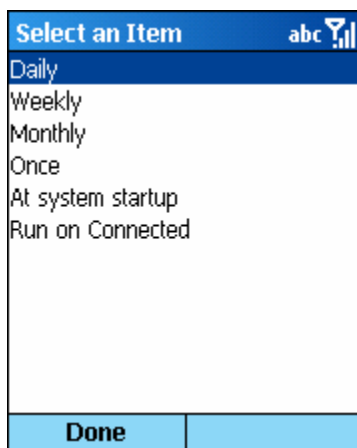


Please note the following screen shot, which shows a numbered list of each option. The options are described below:



The features on the above screen are as follows:

1. "Activate scan task" – Once you tick this checkbox, it gives you access to all of the screen's commands, and it retrieves all the scheduling data.
2. "Don't Ask to execute" – If this option is selected, the scheduled scan task will run automatically without asking for user confirmation first.
3. This field shows the task to be scheduled; it can be modified.
4. Scheduler Frequency Options – this field defines exactly when the task will be executed. Simply click the Edit button to adjust this field.



The options can be visualized as listings. If so, just click on the corresponding field when highlighted.

5. This field shows the current configuration that was chosen.

6. If ticked off, this option tells the program to try again when the device boots up, but only in case an error occurred when first trying to execute the task.

This following screenshot shows an example of a configuration:

Scan abc

Activate scan task
 Don't ask to execute

Scanner

Daily **Edit**

Execute at 12:33 every 4 day(s)

If missed:
 Start when device start-up

Save **Cancel**

Scheduling a Task

When choosing how often you want to scan, click the “Edit” button as shown next to “Daily” in the screenshot below.

Scan

Activate scan task
 Don't ask to execute

Scan Test plan

Daily **Edit**

Execute at 12:33 every 4 day(s)

If missed:
 Start when device start-up

Save **Cancel**

If you have chosen a daily scan, you will see the following screen after you select “Edit”:

Daily

Schedule Task Daily:

Start Time:
12:33:00 PM

Every:
4 Day(s)

Confirm **Cancel**

On the Daily scheduling screen as shown above, you can change the time and the scan frequency (in number of days). Click on “Confirm” to save or on “Cancel” to abort.

If you prefer a weekly scan, then select “Weekly” as shown in the screenshot below and click “Edit.”

Scan

Activate scan task
 Don't ask to execute

Scan Test plan

Weekly Edit

Execute at 10:46 on Mon, Tue, Wed, Thu, Fri, Sat, Sun, every 1 week(s)

If missed:
 Start when device start-up

Save **Cancel**

You will then see the following screen:

Weekly

Schedule Task Weekly:

Start Time: 10:46:00 AM Every: 1 week(s)

Mon Thu Sun

Tue Fri

Wed Sat

Confirm **Cancel**

On the Weekly scheduling screen, you can choose the interval frequency in weeks, and you can also choose which weekdays you prefer. Click on “Confirm” to save or on “Cancel” to abort.

If you prefer monthly scanning, select “Monthly” and then “Edit” as shown below:

Scan

Activate scan task

Don't ask to execute

Scan Test plan

Monthly ◀ ▶ **Edit**

Execute at 17:30 on day 5 of Feb, Apr, May, Jun, Jul, Aug, Sep, Oct, Nov, Dec.

If missed:

Start when device start-up

Save **Cancel**

You will then see the following screen:

Monthly

Schedule Task Monthly:

Start Time Day
 5:30:00 PM

Weekday of the Month
 First

Jan Feb Mar Apr
 May Jun Jul Aug
 Sep Oct Nov Dec

Confirm **Cancel**

On the Monthly scheduling screen, you can modify the following:

1. The hour of the task execution.
2. Which monthly date OR which monthly week, along with its weekday, the task will run
3. Which year-long months the task will be run.

Click on “Confirm” to save, or on “Cancel” to abort.

The following screenshot shows an example test plan that we created. January and March have been left out on purpose, for the sake of this example:

Scan

Activate scan task
 Don't ask to execute

Scan Test plan

Monthly

Execute at 17:30 on day 5 of
 Feb, Apr, May, Jun, Jul, Aug,
 Sep, Oct, Nov, Dec.

If missed:
 Start when device start-up

Save **Cancel**

However, if you only want to schedule a single, one time only scan, then you should select ‘Once’ and then ‘Edit’ as shown below:

Scan abc

Activate scan task
 Don't ask to execute

Scan Test plan

Once **Edit**

Execute at 10:46 of 07/06/2005

If missed:
 Start when device start-up

Save **Cancel**

You will then see the following screen:

Once

Schedule Task Once:

Start Time:
10:46:00 AM

Run on:
5/25/2005

Confirm **Cancel**

On the scheduling screen for just one execution, you can change the hour and day of the task to be run. Click on “Confirm” to save, or on “Cancel” to abort.

Note: After you have created your scan test plan, click “Save” (at the bottom left of the following screen:

Scan

Activate scan task

Don't ask to execute

Scan Test plan

Daily ◀ ▶ **Edit**

Execute at 12:33 every 4 day(s)

If missed:

Start when device start-up

Save **Cancel**

AirScanner Scheduler

Configured Tasks

Scan Test plan	Pending
Update plan	Disabled

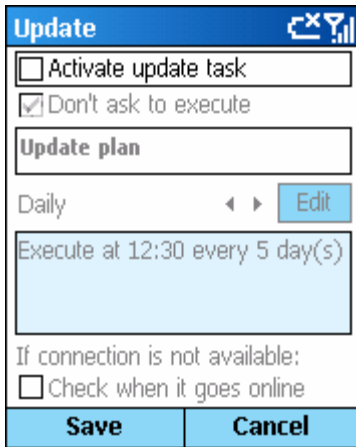
Last Start	Next Start
not executed yet	07/06/2005 12:33

Edit **Done**

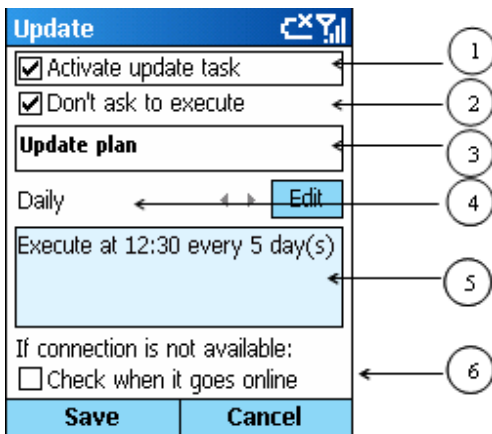
After having saved the Scan task you prefer, its status will show, “Pending” up until to the moment it will be executed for the first time.

Update Plan

Just like the Scan test plan described above, you can set the Update task to update your virus signatures automatically online. Simply select “Update Plan” as shown below:



In the screenshot below, all of the options (1-5) work the same as the Scan test plan described above, but the last option (6) is different:



Option 6 tells the scheduler to attempt an update again as soon as the device is on-line. This is just in case the connection was unavailable during updating, which would lead to a task execution error.

Otherwise, all the Update tasks are described in detail in the Scan Test section above. However, the “Run on Connected” option is unique to the Update part of the program.

To use this feature, select “Run on Connected” as shown below:

Update

Activate update task
 Don't ask to execute

Update plan

Run on Connected ◀ ▶ **Edit**

Execute this task when connected once a day.

If connection is not available:
 Check when it goes online

Save **Cancel**

You will then see the following screen:

Run on Connected

Schedule Task On Connected:

Only run this task once a day

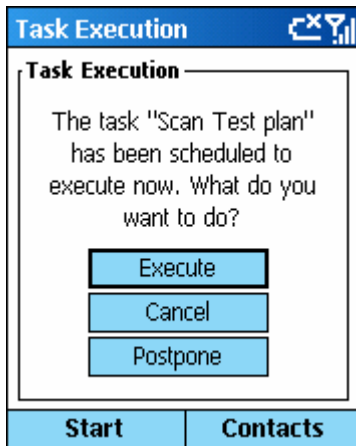
Confirm **Cancel**

On the “Run on Connected” scheduling screen, the Scheduler can be programmed to run a task only once, in case the hardware is connected more than once a day. Click on “Confirm” to save, or on “Cancel” to abort.

Note: remember to save your Update test plan by clicking “Save” when you are done.

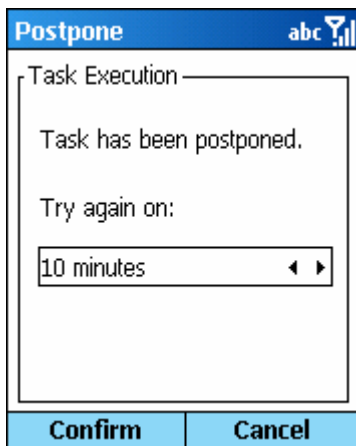
Running a programmed Task

At the time a task is scheduled, the system will check whether the “Don’t ask to execute” option has been ticked off. If so, the screen below will be displayed asking for your confirmation to execute the program.

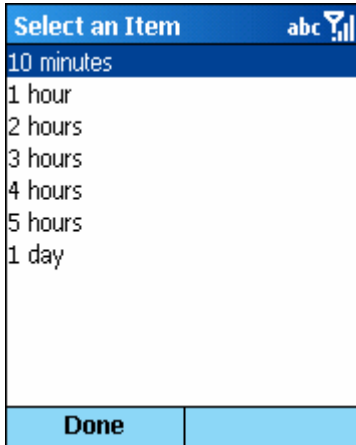


You can then choose one of the following options:

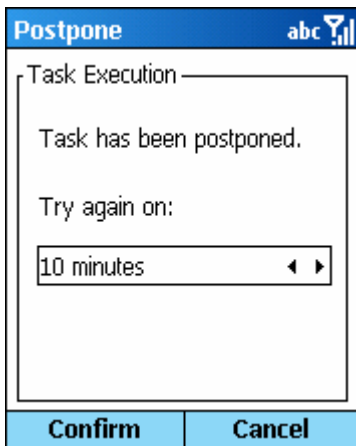
1. *Execute* – runs the programmed task immediately;
2. *Cancel* – aborts the task’s execution at this moment, without deleting its future scheduled runs, if applicable;
3. *Postpone* – re-schedules the task execution for a later time. By clicking the “Postpone” button, the system displays the following screen:



The screen asks the user how much time to postpone the task. By clicking the button 1, the postponing options will be displayed, as shown in the next screen.



You can then select a time and then press "Done". After that, click on "Confirm" to postpone the task execution. You will see the following screen, and the task will be run later according to your choice.



The postponement can be verified on the Scheduler main screen. The task status is now dated forward and is shown as "Postponed".